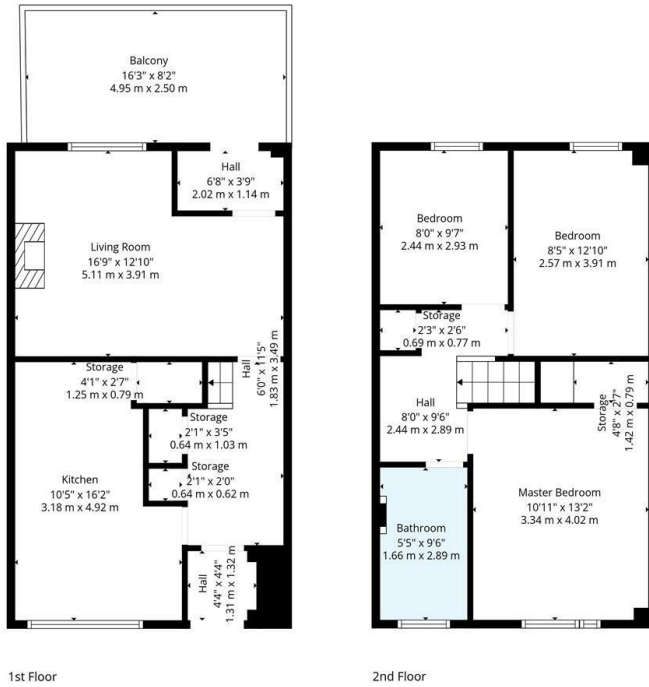




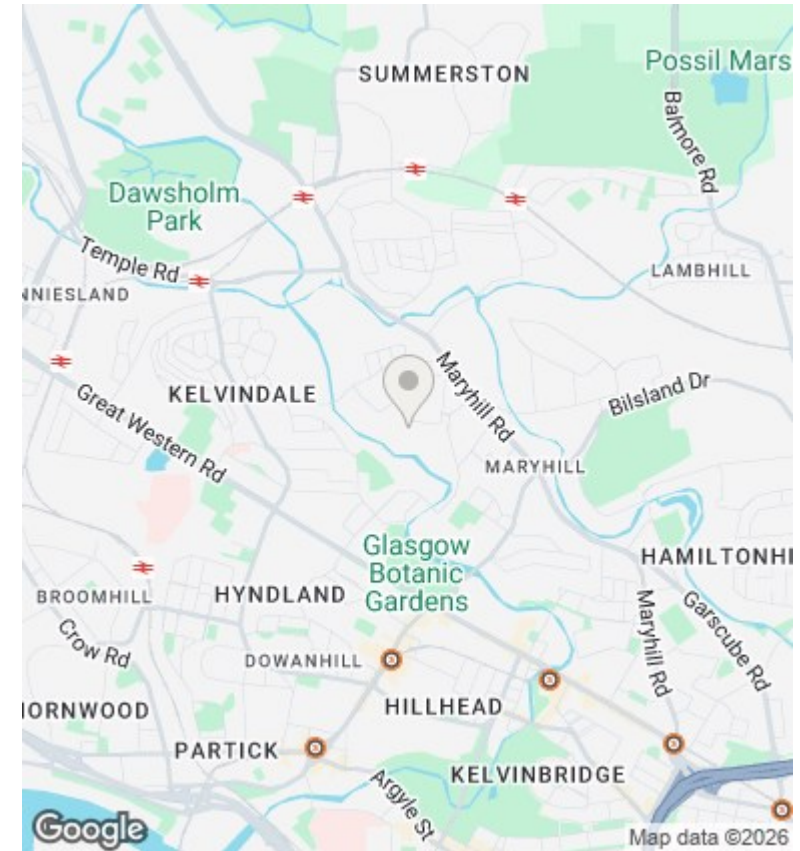
## 11 Melvaig Place, Glasgow, G20 8EY

Offers Over £115,000

- Three bedroom Maisonette property
- Large balcony with attractive outlook
- Residents parking
- Popular location in Maryhill, close to the West End
- Large fitted kitchen
- Gas central heating and double glazing
- Spacious rooms sizes
- Modern Shower room
- EER Band E



**TOTAL: 934 sq. ft, 86 m<sup>2</sup>**  
 1st floor: 467 sq. ft, 43 m<sup>2</sup>, 2nd floor: 467 sq. ft, 43 m<sup>2</sup>  
 EXCLUDED AREAS: BALCONY: 134 sq. ft, 12 m<sup>2</sup>, STORAGE: 47 sq. ft, 5 m<sup>2</sup>, WALLS: 95 sq. ft, 10 m<sup>2</sup>  
Floor Plan Created by Cubicase App. Measurements Deemed Highly Reliable But Not Guaranteed.



## Directions

## Viewings

Viewings by arrangement only. Call 01417262111 to make an appointment.

## Council Tax Band

## EPC Rating:

E

